



# GMT MONTHLY MEMBERSHIP PROGRESS REPORT

Results as of: 9/30/2019

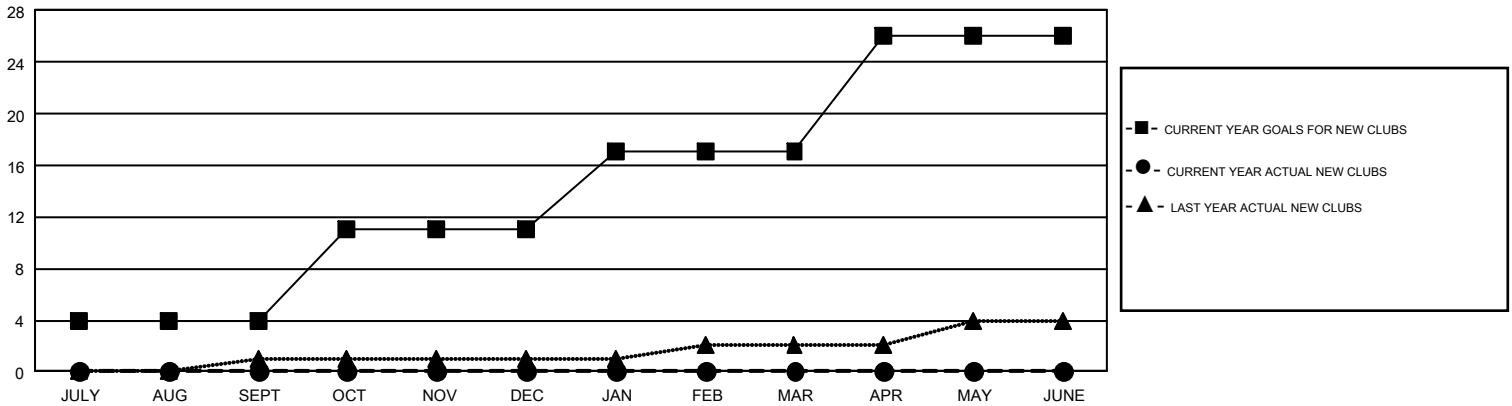
## GMT Constitutional Area 1, Group N

GMT: OPEN

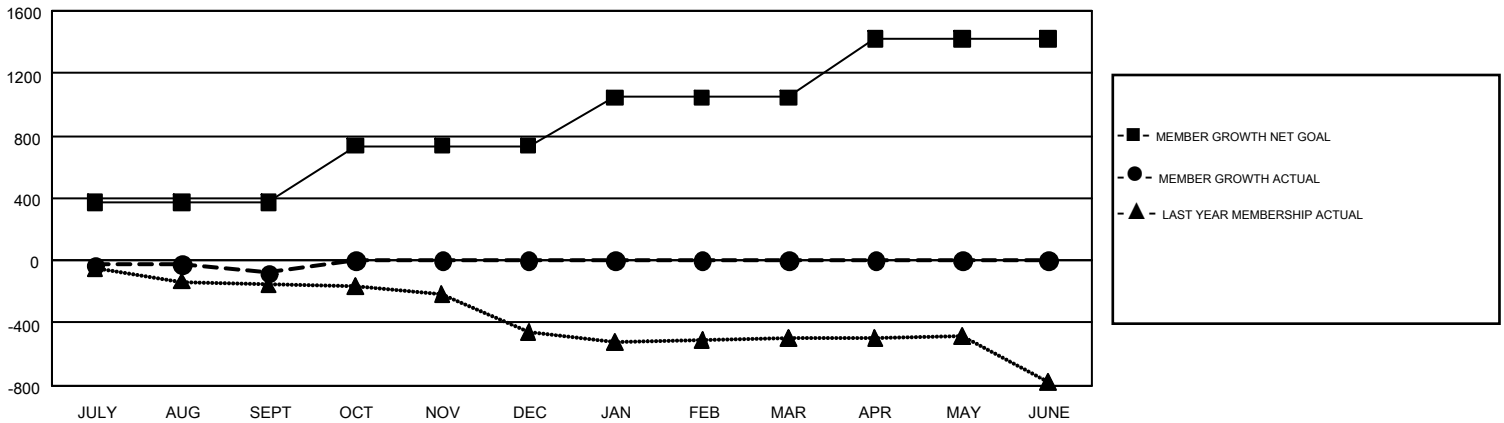
REPORT DOES NOT INCLUDE CLUBS IN UNDISTRICTED AREAS.

Clubs				Members			
RESULTS FOR 2019-2020				RESULTS FOR 2019-2020			
QUARTER	NEW CLUB GOAL	NEW CLUBS	DROPPED CLUBS	QUARTER	MEMBER GROWTH NET GOAL	MEMBER GROWTH ACTUAL	DROPPED MEMBERS ACTUAL (including transfers)
JULY/AUG/SEPT	4	0	1	JULY/AUG/SEPT	371	370	407
OCT/NOV/DEC	7	0	0	OCT/NOV/DEC	365	0	0
JAN/FEB/MAR	6	0	0	JAN/FEB/MAR	311	0	0
APR/MAY/JUNE	9	0	0	APR/MAY/JUNE	374	0	0

GOALS AND ACTUAL NEW CLUBS CUMULATIVE



GOALS AND ACTUAL MEMBERS CUMULATIVE



DROPPED CLUBS: 1	163 CLUBS OF 594 ADDED 1 OR MORE NEW MEMBERS	<b>GENDER DISTRIBUTION</b> MALE 9,289 (67.08%) FEMALE 4,558 (32.92%)
<b>DROPPED MEMBERS</b> DECEASED 45 CLUB CANCELLED 0 OTHER 362 <b>TOTAL 407</b>	<a href="#">CLICK HERE FOR CUMULATIVE MEMBERSHIP DATA</a>	TOTAL FAMILY UNIT MEMBERS 2,643 FAMILY MEMBERS PAYING HALF DUES 1,350